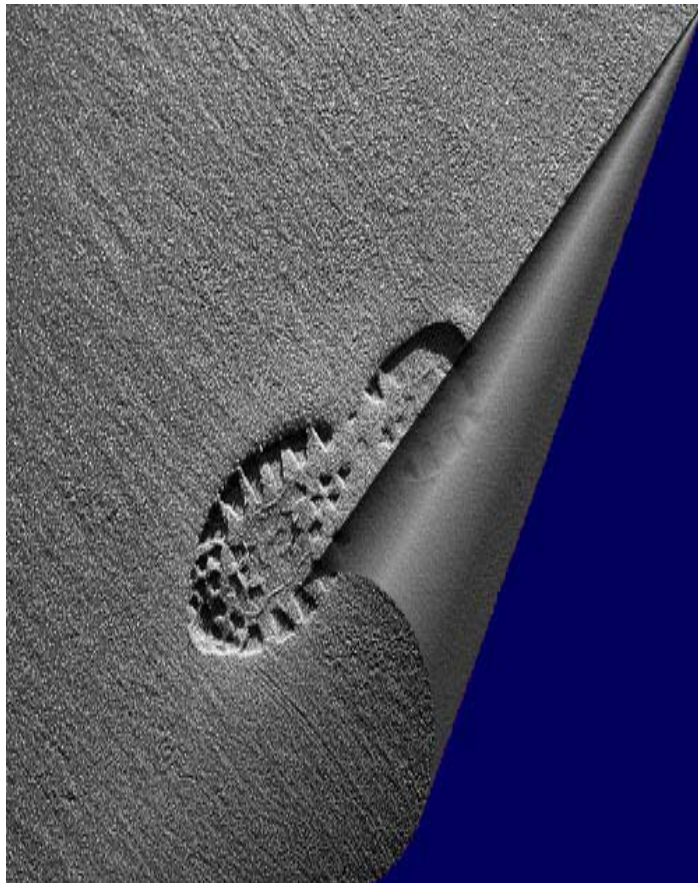


19th International MIRCE Symposium

System Operational Effectiveness Series

Engineering and Managing Sustainability

A Reliability, Maintainability and Supportability Perspective






**Woodbury Park
Exeter
United Kingdom
2 – 3 December 2009**

Organised by



Mirce Science

Register Now

 +44 (0) 1395 233 856
 +44 (0) 1395 233 899
 mirce@mirce.net

19th International MIRCE Symposium

Woodbury Park Exeter United Kingdom
2 – 3 December 2009

Engineering and Managing Sustainability

A Reliability, Maintainability and Supportability Perspective

Engineering and Managing Sustainability involves the acquisition, operation, maintenance, support, disposal and recycling of system components to deliver the required levels of operational effectiveness in a way that achieves value for money on a through life basis without compromising the future availability of resources.

This requires the optimum use of operation and maintenance resources, including energy, through comprehensive life cycle analysis that mitigates resource shortages and environmental damage.

Focus

This Symposium will address the question of how to analyse and assess Sustainability issues and to formulate strategies to implement practical sustainable solutions for through life system effectiveness.

The Symposium will be of interest to a worldwide audience from industry, government, academic and research organisations.

Features

Access new developments and industry best practice through –

- Presentations
- Technical Discussion
- Practical Application
- Technical Visit
- Networking

Cost

The cost of the full two-day Symposium Package is £495-00 plus UK VAT per person and includes all sessions, materials, lunches and light refreshments, symposium dinner and supporting events.

Other Packages are available – see **Booking Form** on the reverse of this brochure for further details.

MIRCE Mechanics – the Key for Engineering and Managing Sustainable Systems

A Reliability, Maintainability and Supportability Perspective

presented by

Dr Jezdimir Knezevic

Thursday 3 December, 0900 - 1300

All system engineering and management related decisions have one common element from the RMS perspective – functionability phenomena (failures and repairs). After several decades of studying these phenomena, Dr Jezdimir Knezevic has formulated **MIRCE Mechanics**, the study of the laws of the motion of system functionability through time, which are scientific foundation for Managing Industrial Reliability, Cost & Effectiveness. During this presentation he will share with participants his conclusions that have fundamental impact on designing and managing sustainable systems of the future. It applies to:




- Reliability Predictions
- Maintainability Trade offs
- Supportability Resources, such as:
 - Spares
 - Facilities
 - Training
 - Transportation
- Availability and Readiness
- Direct Maintenance Cost
- Direct Logistics Support Cost
- Whole Life Cost
- Front Line Capability
- Customer Satisfaction

This unique presentation is imperative for design engineers, project managers, system analysts, government officials, marketing personnel, as well as all academics involved with Master of Business Administration Programmes.

The principles of mircemechanics can be applied to generic systems including, for example, systems developed and operated in the aerospace, defence, automotive, communications, information, agricultural, transportation, utility, manufacturing, and service sectors.

Sustainable systems are only those whose functionability phenomena are understood and accurately predicted.

Contact Mirce Science

-  Tel +44 (0) 1395 233 856
-  Fax +44 (0) 1395 233 899
-  Email mirce@mirce.net

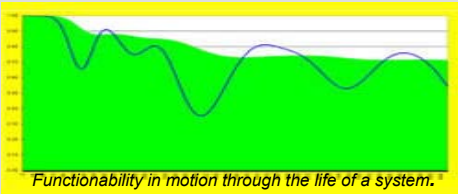
19th International MIRCE Symposium

Woodbury Park Exeter United Kingdom
2 – 3 December 2009

Wednesday 2 December 2009

0900 – 0945	Increasing Helicopter Sustainability and Reducing Operational Cost <i>John Thompson, Agusta Westland Helicopters, UK</i>
0945 – 1030	Sustainability – Importance of Effective Support Solutions <i>Tony Martin, Systems Consultants Services Limited, UK</i>
1030 – 1100	Morning Coffee
1100 – 1145	Analysis for Sustainable Support of a Mature Weapon System <i>Antonio Marras, NATO Maintenance and Supply Agency, Luxembourg</i>
1145 – 1230	Qualification and Certification of Platforms Post Life Extension Programmes <i>Mark Willis, Harmonic Limited, UK</i>
1230 – 1400	Lunch
1400 – 1445	Managing Expectations to Achieve Sustainable Technologies <i>Dr Robert Hodgson, University of Exeter, UK</i>
1445 – 1530	Energy Consumption Based Adaptive Maintenance Strategies <i>Dr David Baglee and Dr Mike Knowles, The Industry Centre, University of Sunderland, UK</i>
1530 – 1600	Afternoon Tea
1600 – 1645	Can Target Build Life Improve the Sustainability of Gas-turbine Engines? <i>Dr John Crocker, Fellow of the MIRCE Academy, UK</i>
1645 – 1730	Sustainability of Avionics through better Understanding of Cosmic Rays Impact <i>Ian Zaczyk, Doctoral Diploma Programme, MIRCE Academy, UK</i>
1930	International MIRCE Symposium Traditional Christmas Dinner including the MIRCE Academy F1RE Centre Reliability Championship Awards 2009

Thursday 3 December 2009

0900 – 1030	MIRCE Mechanics – the Key for Engineering and Managing Sustainable Systems A Reliability, Maintainability and Supportability Perspective <i>Dr Jezdimir Knezevic, MIRCE Academy, UK</i> See page above for full details
1030 – 1100	Morning Coffee
1100 – 1300	MIRCE Mechanics – continued
	
1300 – 1400	Lunch
1400 – 1445	Rapid Modelling and Simulation of Supportability Problems <i>Dr Ryan Chan, LSC Group, UK</i>
1445 – 1530	Strategies for Obsolescence Management <i>Clive Nicholas, Mirce Engineering, UK</i>
1530 – 1600	Afternoon Tea
1600 – 1730	Technical Visit F1 Reliability and Effectiveness A technical visit to the F1 Reliability and Effectiveness Centre and the Nigel Mansell World of Racing -1992 F1 and 1993 Indy Champion. Lessons learned for other performance and time critical operations. <i>Dr Jezdimir Knezevic, MIRCE Academy, UK</i>
1730	Close and Depart

The Venue

The Symposium will be held at **Woodbury Park Hotel, Golf and Country Club**, which is approximately eight miles from Exeter by road.

Delegates are responsible for the arrangement and payment of their own accommodation. Delegates wishing to take advantage of preferential room rates should contact Woodbury Park Hotel Reservations quoting 'MIRCE'.

Woodbury Park Hotel, Golf and Country Club, Woodbury, Exeter, EX5 1JJ, United Kingdom

Tel +44 (0) 1395 233 382
Fax +44 (0) 1395 233 384
Email enquiries@woodburypark.co.uk
Web www.woodburypark.co.uk

A list of alternative accommodation in other hotels and guesthouses in the vicinity is available on request.



Formula 1 Reliability & Effectiveness Centre, 2009 Driver and Team Reliability Championship Awards will be announced during the Symposium Dinner

19th International MIRCE Symposium

Woodbury Park Exeter United Kingdom
2 – 3 December 2009

Booking Form

Please photocopy for each additional participant

☎ telephone

+44 (0) 1395 233 856

☎ fax

+44 (0) 1395 233 899

✉ email

mirce@mirce.net

✉ post

Mirce Science
Woodbury Park
Woodbury
Exeter EX5 1JJ
United Kingdom

Terms and Conditions

Substitution of participants may be made at any time. If you intend to do this, please advise Mirce Science as soon as possible.

Cancellation of a booking must be received in writing by the organiser at least 14 days before the commencement of the event in order to receive a refund of payment. Mirce Science regrets that no refunds will be made after the deadline.

Mirce Science reserves the right to change the advertised programme or location or to cancel the event at its discretion. In the event of cancellation of the event by Mirce Science payments received at the cancellation date will be refunded. All places offered are subject to availability.

Mirce Science is not responsible for any loss or damage as a result of substitution, alteration or cancellation of the event.

Mirce Science is unable to accept liability for the loss of, or damage to, the belongings of those attending the event.

Value Added Tax (VAT)

Unless special exemption arrangements exist, under UK Customs and Excise regulations participants from all countries are required to pay UK VAT @ 15% at the time of publication. Non-UK participants may be able to recover VAT incurred via the relevant tax authority in their country of origin.

Package Required (✓ please tick box)

<input type="checkbox"/> Full Two Day Programme and Supporting Events		£495.00 + £74.25 VAT = £569.25
<input type="checkbox"/> One Day Programme Please also tick the appropriate boxes opposite to show on which day you wish to attend	<input type="checkbox"/> Wednesday <input type="checkbox"/> Thursday	£250.00 + £37.50 VAT = £287.50
<i>Please note that the One Day Programme does not include the Symposium Dinner – if you wish to attend see below.</i>		
<input type="checkbox"/> Symposium Dinner Only		£43.48 + £ 6.52 VAT = £50.00

Participant Details

Surname			
First Name			
Position			
Department			
Organisation			
Address			
Zip/Post Code		Country	
Telephone		Fax	
Email			
Special Requirements			
Dietary			
Other			
<i>I understand and accept the terms and conditions and payment as shown</i>			
Signature		Date	

Joining Instructions and a VAT Invoice will be issued on receipt of this form

Payment Method (✓ please tick box)

<input type="checkbox"/> Cheque (made payable to Mirce Science)	
Cheque enclosed for £	(in GB Pounds)
<input type="checkbox"/> Bank Direct Transfer (net of transaction any charges)	
Bank details (please quote Course and Date on remittance advice) National Westminster Bank plc, Exeter Bank Branch, 59 High Street, Exeter, EX4 3DL, United Kingdom / Sort Code: 56 – 00 – 49 / Account: Mirce Science Limited / Account No. 25189603 IBAN: GB07 NWBK 5600 4925 1896 03 / BIC: NWBK GB 2L	
<input type="checkbox"/> Credit Card (please debit my credit card)	
Visa	
MasterCard	
Amex	
Cardholder's Name	
Card No.	
Security Code	
Expiry Date	
Cardholder Signature	
<input type="checkbox"/> Invoice (please invoice my organisation)	
For the attention of	
Purchase Order No.	
Address (if different from above)	
Zip/Post Code	Country